

# Common Lizard

*zootoca vivipara*

The Common Lizard is Ireland's only native reptile and can be found, when the weather is warm, sunning itself on stone walls, logs and rocks. It is also known as the viviparous lizard and has a widespread distribution around the country.



## Lizard or Newt?

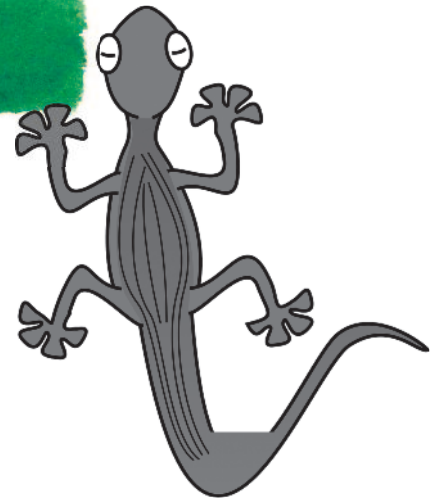
- The Common Lizard is our only reptile; the newt is one of 3 species of native amphibian.
- Whilst lizards will be found on land, newts can be found in still or slow moving water.
- The newt has smooth skin, while the lizard is scaly.
- Newts have 5 digits on their back legs and 4 on the front; lizards have 5 on both front and back.



## Did you know?

If caught by the tail by a predator, lizards can shed the lower portion to escape!

Lizards in Ireland will hibernate from October to March, often in groups.



## Lizard birth

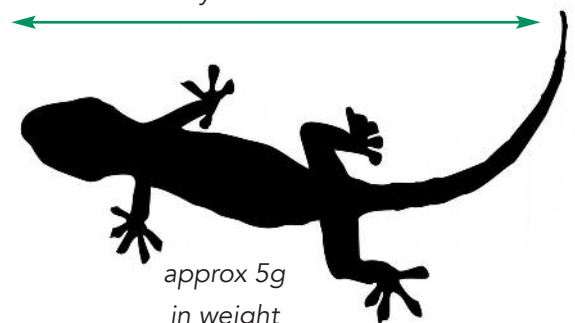
The Common Lizard, unlike most other reptiles, gives birth to live young. The female produces eggs but she keeps them inside for about 3 months. The young will then break free from the eggs whilst still inside their mother and emerge as live young lizards.

## What do Lizards eat?



The Common Lizard will feed on invertebrates like small insects, snails and spiders. The lizard will shake the prey in their jaws before chewing and swallowing it whole!

usually 10 to 16cm in length although they can reach 18cm



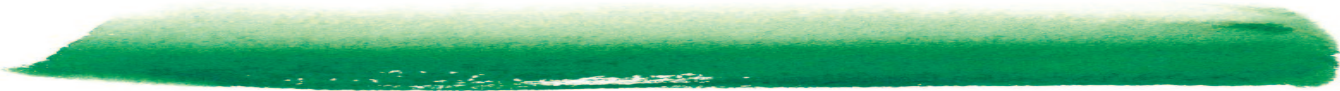
approx 5g  
in weight

# The Common Lizard wordsearch

Can you find all the words? The answers go in all directions!



predator reptile lizard native spiders  
hibernate amphibian common viviparous  
newt land snail tail



Anaclann Éan Fian Loch Garman  
Wexford Wildfowl Reserve

web: [wexfordwildfowlreserve.ie](http://wexfordwildfowlreserve.ie)  
email: [wwreducation@chg.gov.ie](mailto:wwreducation@chg.gov.ie)  
facebook: [@npwswexfordwildfowlreserve](https://www.facebook.com/npwswexfordwildfowlreserve)  
instagram: [wexfordwildfowlreserve](https://www.instagram.com/wexfordwildfowlreserve)